



PATEL MINECHEM



Activated Bleaching Earth/Clay

Reg. Address: B/06, Maruti Flats,
Near K K Nagar Road, Ghatlodia, Ahmedabad,
Gujarat, India, Pin code: - 380061

Unit: Survey no. 909/2, Village- Palasar,
Dhinoj-Palasar Road, Ta. - Chanasma,
Di. - Patan, Pin-384229

+91-9712065065, +91-8849493648

patelminechem@gmail.com
sales.patelminechem@gmail.com

www.patelminechem.com

ACTIVATED BLEACHING EARTH/CLAY

It is great pride to introduce ourselves as manufacturer and exporter of high quality bleaching earths/fuller's earth from 2016. We have plant capacity 9,000 MT per annum in powder and granules forms. We mine, process and market all types of Bleaching Earth for all type of edible and non edible oils processing.

Bleaching Earth is manufactured from the best quality raw materials, we carefully select raw Bentonite clay and monitor through number of quality control checks and procedures. At processing plant, we use the most advanced technology and state of art machinery through experienced staff to monitor and manufacture the best quality Bleaching Earth. The quality control checks at all stages of production, handling and dispatch.



Higher Bleaching Rate: Effective removal of chlorophyll, carotenes and other coloring pigments.



Minimal Oil Retention: Quick easy settling and filtration results in less oil loss for the customer and higher through put.



Lower Dosage: Higher active surface area results in improved bleaching capacity using less quantity of clay.



Toxin Free: Contains no mineral acids that can damage the oil.

BLEACHER™

BLEACHER 09 (HIGH GRADE)

PHYSICAL PROPERTIES*

Parameter	Bleacher 09 (High Grade)
Moisture @110°C (%)	8
Finesse (%)	
100 Mesh	98.75
200Mesh	94
240Mesh	85.25
Residual Acidity (% H ₂ SO ₄)	max 0.3
Residual Acidity (mg KOH/gm)	max 2.5
pH (10.0% Suspension)	3-3.5
Bulk Density (g/cm ³)	0.48-0.55
Specific Surface Area (m ² /gm)	350
Particle Size (%)	
<5 micron	17
Average Particle Size (μ)	27

CHEMICAL COMPOSITION*

Parameter	Unit	Bleacher 09 (High Grade)
Silica (SiO ₂)	%	79.23
Aluminum (Al ₂ O ₃)	%	8.5
Iron (Fe ₂ O ₃)	%	3.4
Calcium (CaO)	%	2.5
Magnesium (MgO)	%	1.5
loss Of Ignition (LOI)	%	4
Total	%	99.13

BLEACHER™

BLEACHER 19 (LOW GRADE)

PHYSICAL PROPERTIES*

Parameter	Bleacher 19 (Low Grade)
Moisture @110°C (%)	8
Finesse (%)	
100 Mesh	99.5
200Mesh	89.25
240Mesh	80.25
Residual Acidity (% H ₂ SO ₄)	max 0.1
Residual Acidity (mg KOH/gm)	max 1.0
pH (10.0% Suspension)	5-5.5
Bulk Density (g/cm ³)	0.50
Specific Surface Area (m ² /gm)	300
Particle Size (%)	
<5 micron	15.21
Average Particle Size (μ)	26

CHEMICAL COMPOSITION*

Parameter	Unit	Bleacher 19 (Low Grade)
Silica (SiO ₂)	%	72.23
Aluminum (Al ₂ O ₃)	%	8
Iron (Fe ₂ O ₃)	%	6.4
Calcium (CaO)	%	2.25
Magnesium (MgO)	%	3.75
loss Of Ignition (LOI)	%	6.4
Total	%	99.03

USES OF ACTIVATED BLEACHING EARTH

Refining Vegetable oils like: Soybean, Sunflower, Palm, Cottonseed, Rapeseed, Mustard, Peanut, Coconut, Corn, Olive, Rice bran, Castor & Canola etc.

- **Refining Biofuels like:** Bio-diesel & Bio Fuel Etc.
- **Refining hydrogenated vanaspati ghee oils,**
- **Refining Animal Fats like:** tallow oil, fish oil, lard oil.
- **Refining petroleum products, non edible Oil & used oil.**

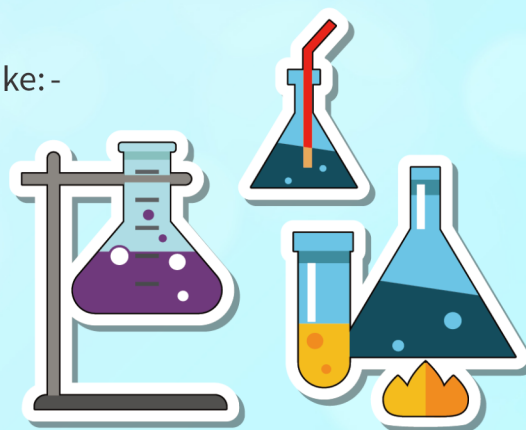
QUALITY CONTROL

Our Laboratories have well equipped and latest equipments for quality measurements. This helps us to constantly improve and develop our product based on customers and industrial feedback. Thus improving product efficiency and it will help to our valuable customers to cut down in process cost/Production cost.

The company has been following the holistic approach for quality control. Quality checks are made starting from the selection of raw material, processing, packaging, storage and till the dispatch of product to end users.

The company has been using the equipments like: -

- ✓ Lovibond Tintometer
- ✓ Moisture Balance
- ✓ pH Meter
- ✓ Particle Size Analyzer
- ✓ Spectrophotometer for chemical analysis



PACKING, STORAGE & HANDLING

Our packing is clean, simple and specifically designed to prevent leaks, our high quality products will arrive in our innovative packaging when you need them.

Packaging Quality: - Packed with inner plastic and outer PP and HDPE Bag

Packing Size: - 25Kgs, 50Kgs, 500Kgs, 1000Kgs & Jumbo bags

Storage:

It is essential to store the product in a dry place to avoid moisture absorption.

Handling:

Our product is free flowing powder/granular. It can very well be automatically conveyed via vacuum line. Normal handling effect has no effect on skin.

